



THE POLICY
CIRCLE®

2021
Impact Report

DEAR FRIENDS & SUPPORTERS, ---

The Policy Circle answers the call of these challenging times with reliable and insightful information, a framework for impactful civic engagement, and a pathway for principled leadership. Our growing tribe of civic-minded women and generous supporters fuels this movement with national reach and local impact.

We continue to be amazed by The Policy Circle's remarkable members, who, ignited by their civic passions and empowered by timely information, have courageously stepped into the arena. These women from 44 states positively impacted their communities as volunteers, task force appointees, committee chairs, board members, and even as winning candidates.

Thank you for joining us in our mission to empower women to become courageous, informed, and thriving citizens who take ownership of solutions to the issues facing their communities.

The best is yet to come!

With gratitude,



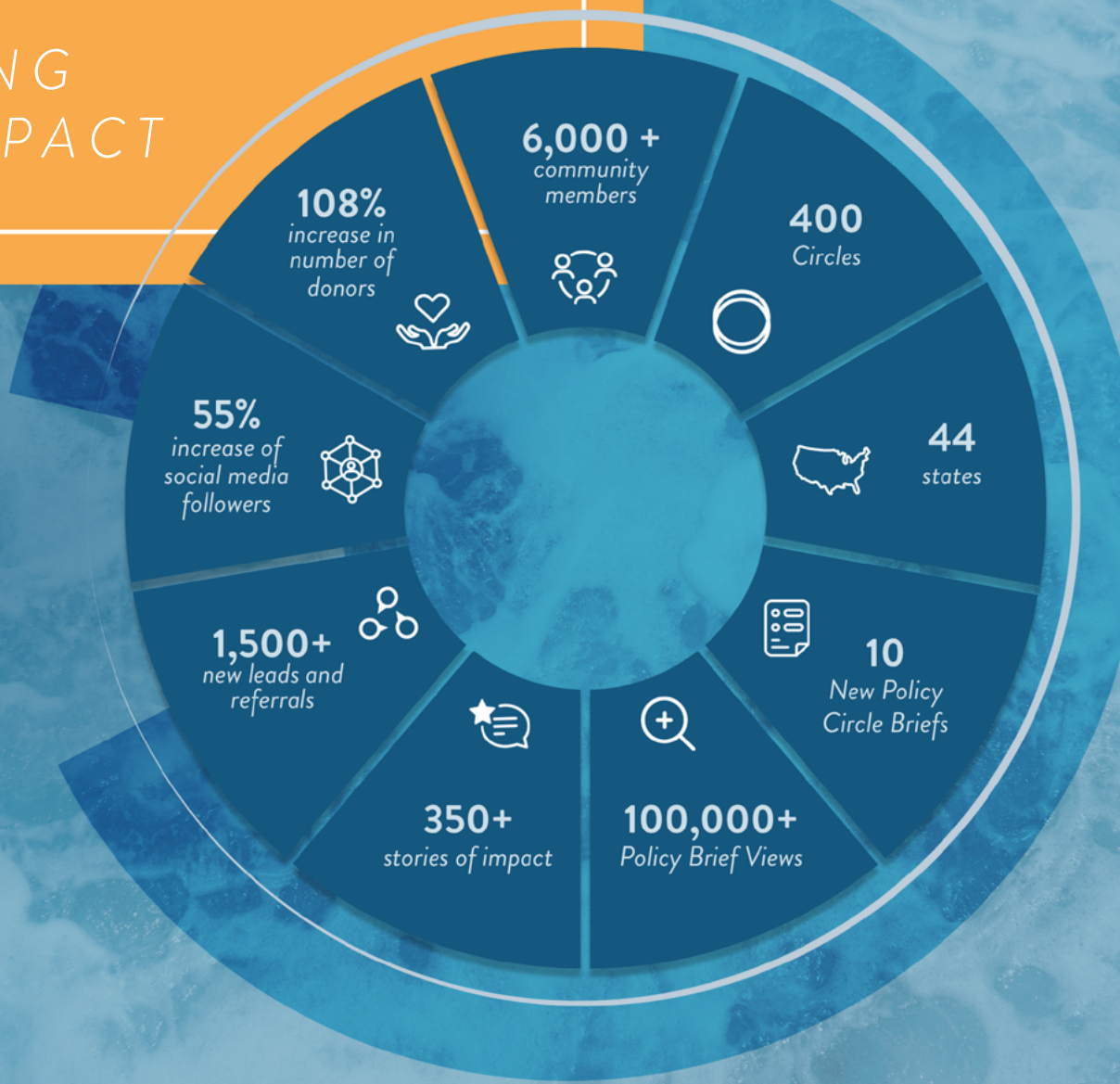
Sylvie L g re
Co-Founder and Board Chair



Stacy Blakeley
Executive Director



2021:
GROWING
OUR IMPACT



“I learned how women can influence any area of the public sector... Amazing women from all walks of life come here to inspire each other and it’s such an intellectual treat.”

— Vasavi C., *The Policy Circle’s Illinois Leadership Council, Member*

WE BUILD LEADERS



The Civic Leadership Engagement Roadmap (CLER) is The Policy Circle's master class.

This proprietary, experiential 3-month program launched in January 2021 and we are already seeing real results. Three Cohorts comprised of women from every phase and stage of life learned founding principles and developed deeper knowledge of how to engage in civic life at the local level.



“As the CLER program began, I put time and effort into getting more familiar with what is actually going on within local government outside of elections... This exercise helped me take the time to actually listen... I've found that it's also very important to engage locally as decisions at this level have a direct and almost immediate impact on our lives.”

— Emilia Czyszczon, *Circle Leader, CLER Graduate, Deerfield, Illinois*

Emilia ran for office in her county and had a referendum to eliminate a wasteful government role placed on the ballot. Although she did not win, the referendum passed.

OUTCOMES OF INAUGURAL YEAR OF CLER



Ran for elected office



Conducted meetings with city, county and state elected officials



Appointed to Mayor's Office of Gender-Based Violence



Appointed to Chamber of Commerce

Applications for the next Cohort are due December 31, 2021 and can be found [here.](#)

WE INFORM & INSPIRE

The Policy Circle continued to deliver thought-provoking and fact-based programming in partnership with a number of organizations and thought leaders. Leveraging technology and social media, The Policy Circle greatly expanded its reach with timely, quality virtual experiences. These catalytic conversations led 55% of participants to take action in their communities on a variety of timely topics.

17 Virtual Programs



34 Thought Leaders
& Policymakers



1,800 Attendees



113% Increase in Program
Attendance from 2020



7,600+ Virtual Programming
Views



VIRTUAL MOVE THE NEEDLE PROGRAMS

Catch up on these insightful conversations today at The Policy Circle's Youtube channel.

Government
Transparency &
Accountability

Mental Health in
America

Big Tech Tightrope:
Balancing Free
Speech, Privacy
& Innovation

Identifying
& Stopping
Misinformation

10 NEW POLICY CIRCLE BRIEFS

- *Mental Health*
- *Government Transparency & Accountability*
- *Impact Investing*
- *Migration Between States*
- *Schools in Communities*
- *Terror Groups & Rogue States*
- *Water & Power*
- *Understanding School Boards*
- *Business Guide to Civic Engagement*
- *Neighborhood Associations' Engagement Guide*
- *Strategic Philanthropy and Civic Engagement*

The Policy Circle received over **100,000 Brief Page Views in 2021** and expanded our library to **55 total briefs** in the Policy Circle library.

WE IGNITE POTENTIAL & SPARK CURIOSITY



This year's hybrid leadership summit focused on the Confluence of Essentials: Water. Power. Leadership.

Over the course of two days, more than 700 participants heard from 33 speakers in 23 sessions to unpack various components of the water and energy sectors in order to:

- Better understand where our energy and water comes from
- How water and power infrastructures function
- How these industries are regulated on the federal and local levels
- The factors that impact the cost and availability of energy
- The connections between human flourishing and water



“ This time was special for so many reasons but primarily because it was a gathering of really strong women of varying backgrounds who are motivated and empowered to be change makers in the world by uplifting and inspiring other women to own their greatness and pass it on.” — Karith Foster, *Speaker, Author, & Diversity Engagement Specialist*



2021 SUMMIT IMPACT

739 TOTAL ATTENDEES
140 IN-PERSON GUESTS
598 VIRTUAL ATTENDEES



34 UNIQUE SPEAKERS



16 SPONSORS
17 COLLABORATORS



100.3K SUMMIT APP
ENGAGEMENTS



11 SUMMIT
PROGRAMMING
SESSIONS



3,500+
VIEWS ON SUMMIT
RECORDINGS

WE COLLABORATE & BUILD

COMMUNITY



STRATEGIC PARTNERSHIPS

From circling up locally to developing relationships with organizations across the country—we believe in collaboration at every level. That’s why we’re proud to work alongside **58 sponsors and partners.**

Our event partnerships this year included the Concordia Summit, State Policy Network Annual Meeting, ACE Scholarships, 11th Annual Bradley Impact Conference, and Greater Fort Wayne’s Women’s Network

BUILDING STRONG REGIONAL LEADERSHIP

To deepen the engagement of Policy Circles in the states and continue expansion, The Policy Circle launched three **new State Leadership Councils** in Michigan, Louisiana, and Florida.





The National Advisory Council meets 4 times per year including in person at the Annual Leadership Summit.

LEADERSHIP

NATIONAL ADVISORY COUNCIL MEMBERS

Cathy Cranberg
Jessica Dean
Rebecca Dunn
Jackie Emmet
Beth Feeley

Elizabeth Fowler
Dawn Hoffman
Blair Maus
Shyan O’Shaughnessy
Melinda Oakes

Liz Orella
Anne Sinnott
Barbara Stewart
Mary Beth Weiss

BOARD MEMBERS

Sylvie Légère,
Co-Founder and Board Chair

Kathy Hubbard,
Co-Founder and Treasurer

Carol Greene,
CEO of Greene Advisors LLC

Angela Braly,
Co-Founder and Secretary

Laura Cox Kaplan,
Creator & Host of She Said She Said Podcast



At the end of the day, we want to ignite those fires within women, to ensure that everyone has a voice.”

— Sylvie Légère, *Co-Founder and Board Chair of The Policy Circle*

The Policy Circle is a 501(c)3 nonprofit, nonpartisan, and grassroots organization that focuses on policy (not politics) and is dedicated to the civic engagement journeys of our members. We stand ready to support our community and continue to create innovative programming to provide pathways for our members to become informed and engaged problem solvers in their communities.

